

USER'S MANUAL

AVENGER II PROGRAMMABLE ALARM SYSTEM

MODEL AV-3000UL

UKPANELS.COM



**acron
corporation**

AV3000UL USER'S MANUAL

INTRODUCTION

Congratulations, your security company has installed an Acron Avenger, Programmable Alarm System. This system consists of a combination control panel, digital communicator and one or more Digi-Key II digital arming stations. The Digi-Key II provides you with full system control and displays full system status. This advanced alarm system has several options. Your security company has selected options to custom-tailor the alarm system to your specific requirements. This booklet covers operation of the basic system; your installer will instruct you on system and Digi-Key II operation.

Your alarm system protects your premises by dividing it into eight zones or areas. Each zone will monitor either: 1) different areas of your building or 2) different functions. For example, Zone 1 may monitor first floor windows, while Zone 8 may monitor Fire detectors. On page 3 of this booklet, space is provided for your installer to identify what each zone is used for. Be sure you are familiar with the description of each zone.

OPERATION

The two switches located inside the cabinet are color coded and used as follows: the red switch resets the smoke detectors while the black switch is used to enter the initial access code into the keypads. Both switches should normally return to the upper position (Refer to Figure 1.) An optional keyswitch to perform the same function as the black switch may have been installed in the front left side of the cabinet.

To arm or disarm the system enter the access code followed by the # ("Enter") key into the Digi-Key II keypad. This will reverse the status of the system. All of the individual zone lights programmed for burglary must be off and the ready light on before the system will arm. Refer to Digi-Key II User's manual for operating instructions.

Zones which have been selected for BURGLARY will trigger an alarm bell for a violated zone. Zones which have been selected for FIRE will trigger a fire horn for a smoke or fire condition and will trigger TROUBLE for a condition that would prevent a fire alarm from being detected due to a broken wire in the fire detection zone/zones.

An alarm is indicated by a flashing armed light and a flashing individual zone light corresponding to the zone violated. Burglar alarm silencing is achieved by entering the access code. If manual reset of fire alarms has been selected, silencing of the fire alarm is accomplished by simultaneously pushing buttons 1 and 3 on the Digi-Key. Entering the access code will silence the fire alarm if manual reset has not been selected.

Fire trouble conditions are indicated by a steady signal from the audible warning device and the designated fire trouble zone light being on.

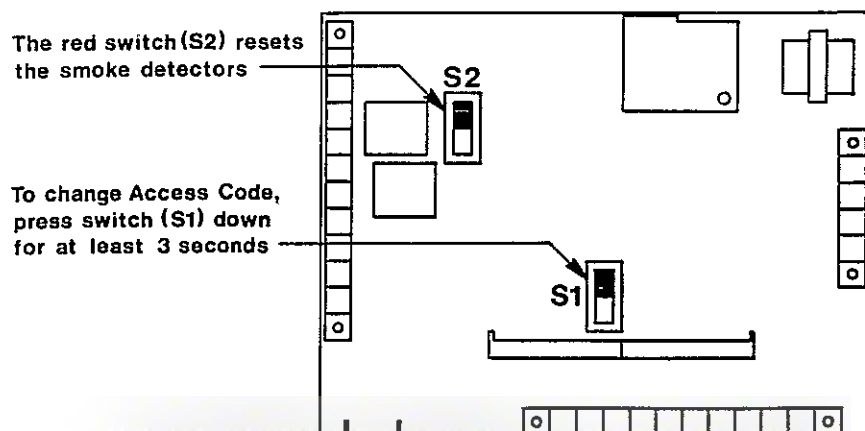


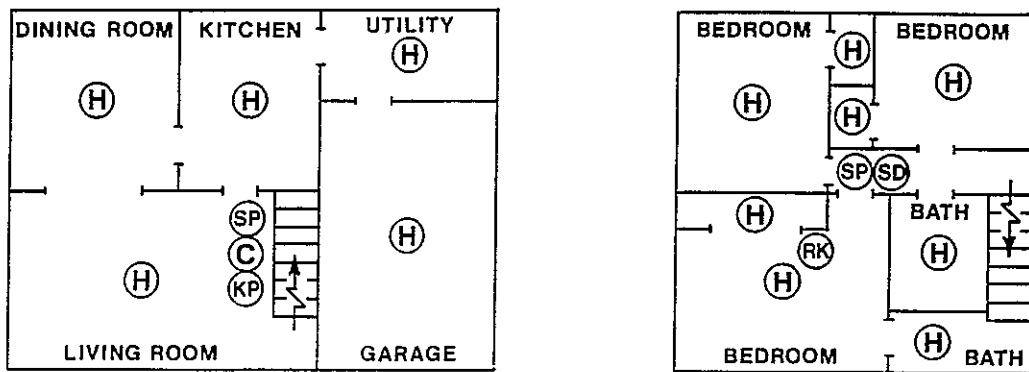
FIGURE 1

PREPARE AN EVACUATION PLAN FOR USE IN THE EVENT FIRE

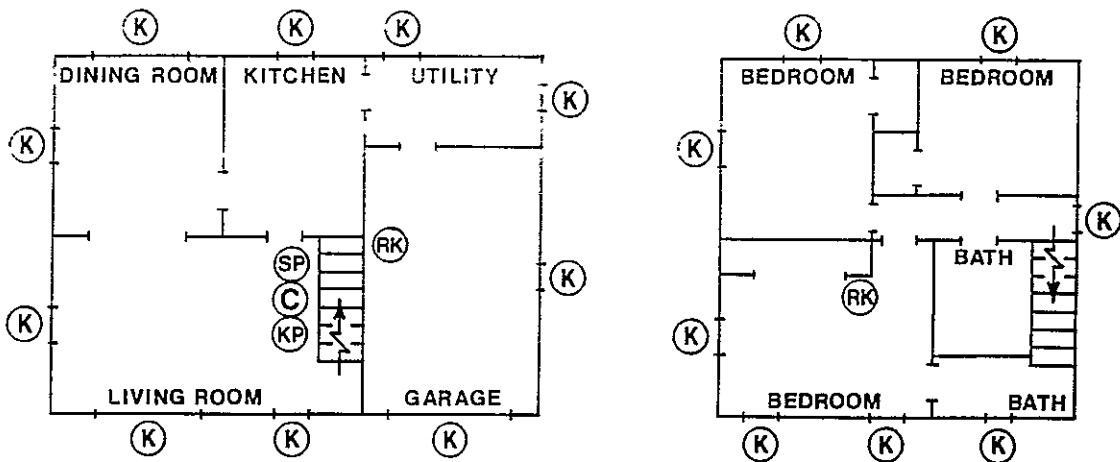
- 1) Evaluate all possible escape routes from building, trying each route
- 2) Select 2 escape routes from each room.
- 3) Second floor rooms should have a rope ladder that reaches the ground.
- 4) Draw a sketch of the escape routes and familiarize everyone with it.
- 5) Select a meeting place outside where everyone is to report.
- 6) Practice the escape plan with everyone in household.
- 7) Advise the local fire department that a fire alarm system is installed.

APPROVAL OF FIRE AUTHORITY DOES NOT INCLUDE BURGLAR INSTALLATION OR EQUIPMENT.

TYPICAL FIRE WARNING INSTALLATION



TYPICAL BURGLARY INSTALLATION



LEGEND

- | | |
|-----------------|-------------------|
| C-Control | SP-Siren or bell |
| H-Heat detector | SD-Smoke detector |
| KP-Keypad | RK-Remote keypad |
| K-Contacts | |

SYSTEM WIRING

ZONE	FUNCTION	AREA PROTECTED
ZONE 1	_____	_____
ZONE 2	_____	_____
ZONE 3	_____	_____
ZONE 4	_____	_____
ZONE 5	_____	_____
ZONE 6	_____	_____
ZONE 7	_____	_____
ZONE 8	_____	_____

If you have any questions or need service contact your security company at:

NOTES

INP032
REV. E

© 1987 ACRON CORPORATION

